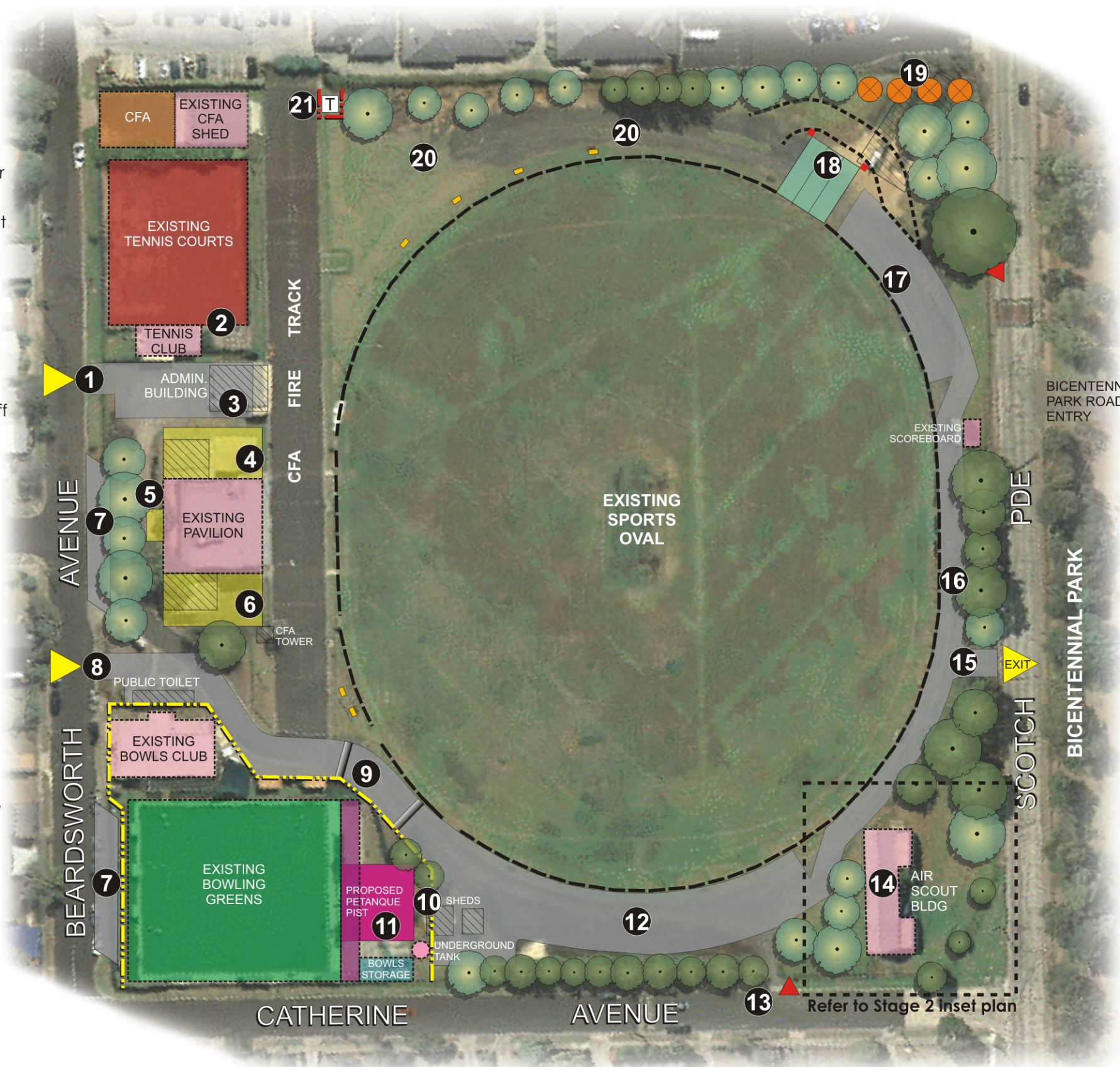


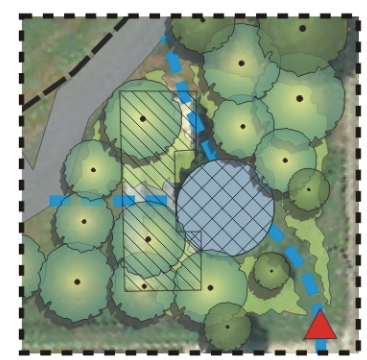
NOTES

- 1 New vehicle entrance off Beardsworth Avenue with gate to control use on match days.
- 2 Retain tennis club rooms and courts and review operations of tennis club.
- 3 New sealed car park between tennis club and main pavilion (approx 10 spaces).
- 4 New home change rooms, canteen, administration area (first floor) and storage for rubbish bins. Relocate existing BBQ.
- 5 Remove existing gravel access road adjacent to pavilion and provide new canopy over existing entrance to improve safety, amenity and functionality.
- 6 New visitor and umpires change rooms and new public toilets.
- 7 Angle parking off Beardsworth Ave (2 bays with approx 12 spaces each).
- 8 Retain, relocate and seal vehicle entrance off Beardsworth Avenue. Include small ticket box. Remove existing public toilets.
- 9 Sealed access road off Beardsworth Avenue with traffic calming devices.
- 10 Replace existing bowls club fence and enclose the new petanque pist, relocate bowls club maintenance shed and remove storage sheds.
- 11 New 16m x 16m petanque pist to accommodate 4 competition sized pists
- 12 Sealed parking around oval (approx 16 spaces).
- 13 Remove vehicle entrance off Catherine Avenue and provide a new pedestrian access point with gate.
- 14 Retain and review Air Scouts hall and review activities. See Stage 2 inset plan for alternate future use.
- 15 New vehicle exit with gate to control use on match days.
- 16 Sealed access road around oval.
- 17 Sealed parking around oval (approx 14 spaces).
- 18 3 cricket practice nets with run-ups located on the oval. Include bollards to protect nets.
- 19 Location for proposed water storage tanks. Water harvesting options to be investigated.
- 20 Overflow parking with new gravel access road at the rear of the cricket practice nets.
- 21 New CFA fire tower storage enclosure.



LEGEND

- Existing structures to remain.
- Existing CFA.
- Existing bowling greens.
- Relocated Bowls Club storage shed.
- Existing tennis courts.
- Existing petanque pist.
- Existing trees.
- Existing oval boundary fence.
- Removal of existing structures.
- Proposed vehicle entrance/exit.
- Pedestrian access point.
- Proposed road surfacing & car parks.
- Proposed access to overflow car parking. To remain grassed.
- Proposed building extensions.
- Proposed new fence for Bowls Club.
- Proposed CFA Tower location and fenced storage enclosure.
- New bollards to protect cricket nets from overflow car parking access.
- Relocated cricket practice nets.
- Proposed trees and landscaping to improve visual ammenity.
- Proposed 16 x 16m petanque pist.
- Proposed water storage facility.
- Proposed standardised seating.



STAGE 2 INSET PLAN
Relocate Air Scouts. Establish feature entrance treatment with paved surface, seating, reserve signage and planting.

