

February 2025

To the Resident,

An update on the playground at Glyn Court/Chelsea Street Reserve, Cheltenham

We're excited to move ahead with our plans to upgrade the Glyn Court/Chelsea Street Reserve playspace in Cheltenham! We're writing to advise nearby residents that construction is due to commence in early March.

The new playground area has been designed to offer an inclusive experience and play environment for all (please see design overleaf).

Highlights of the design include:

- Trampolines
- Inclusive carousel
- Tri-swing set with basket swing
- Combination unit suitable for junior and senior children
- Nature Play
- Tree planting for shade
- New park furniture and drinking fountain

Additional trees and landscaping improvements are included in the design to provide natural shade and screening.

Project timing and impacts

Construction works are due to commence in early March. We anticipate the works will be complete by the end of May 2025, weather permitting.

Access to the southern half of Glyn Court/Chelsea Street Reserve will be restricted throughout the works, with temporary fencing installed for the safety of the community (please see site plan overleaf for details).

We apologise for any inconvenience and will minimise disruption wherever possible while maintaining a safe work site.

Further information

For further enquiries, please contact Council's Active Kingston team, via:

Phone: 1300 653 356 / **Email:** info@kingston.vic.gov.au



This project is supported by the Victorian Government through the Better Parks and Playgrounds Program and the Community Support Fund.

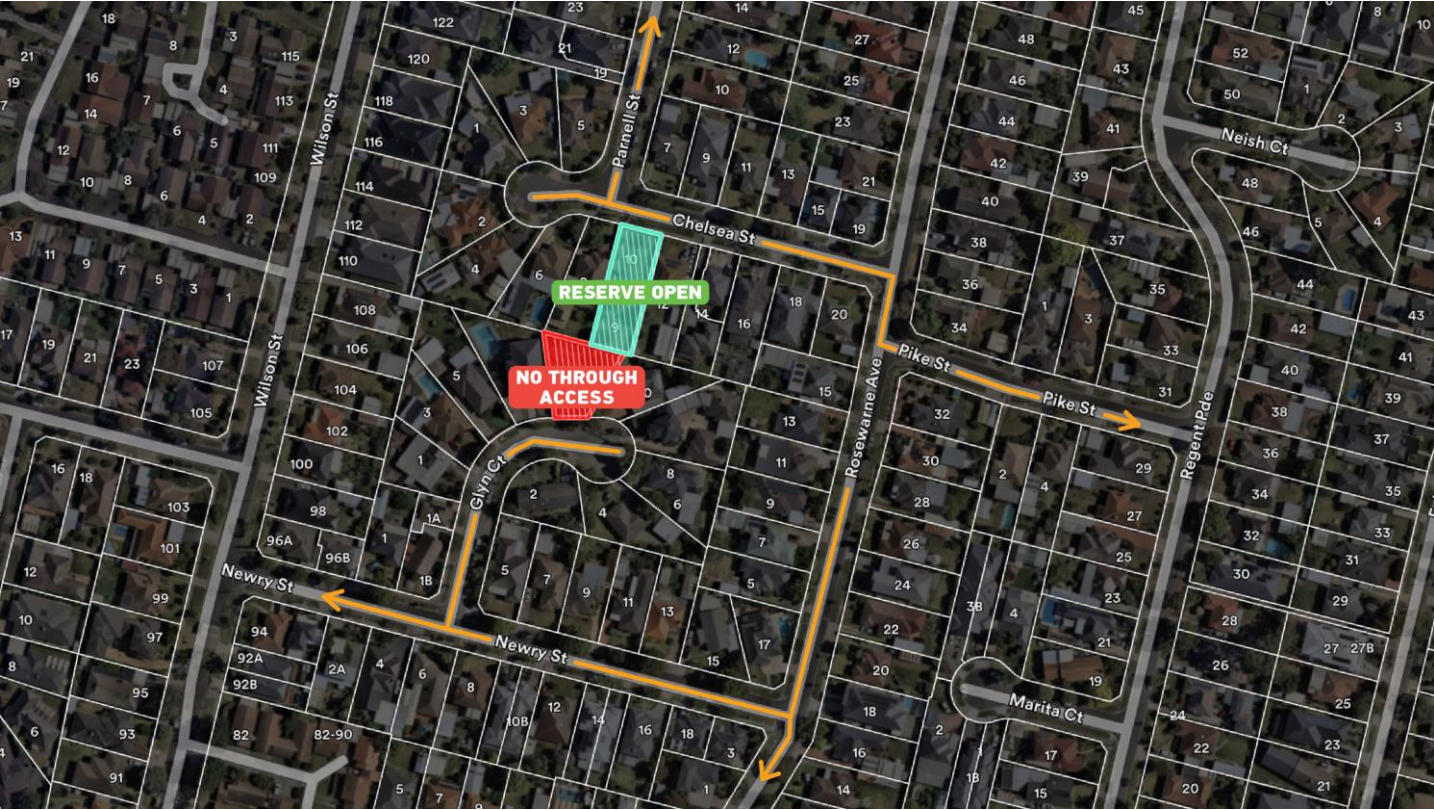


Kingston News.

Sign up to receive the latest updates from the City of Kingston.

📞 1300 653 356 ✉ info@kingston.vic.gov.au 🗣 Interpreter services - TIS National 📞 131 450
📍 1230 Nepean Highway, Cheltenham 3192 🌐 kingston.vic.gov.au 📬 PO Box 1000, Mentone 3194

Access



Playspace design

